

# VINYL PLANK - SELF ADHESIVE INSTRUCTIONS

## SUITABLE SURFACES

Smooth, well bonded solid floors; dry, clean well cured concrete; wood floors with plywood. All surfaces must be dust free.

## UNSUITABLE SURFACES

Particle board or chipboard; concrete surfaces which are below grade and where moisture may be a problem and any form of embossed floors. Not recommended for laying over floor with under floor heating.

## PREPARATION

Quality Craft planks should be allowed to acclimatize at room temperature (approx 20 °C) for 48 hours prior to installation. Carefully check planks for any defects before installation. Check that all BATCH NUMBERS and ITEM NUMBERS are the same and also that you have purchased sufficient material to complete the job. If you intend to lay planks over existing tiles, ensure that tiles are firmly stuck down - if in doubt remove them. Remove any traces of glue or residue from the previous flooring. Remove any traces of wax or other coatings from well bonded, smooth surface floors.

All porous surfaces such as cement and plywood should be sealed with a suitable primer. New concrete floors need to dry out for at least 60 days prior to installation. Wood plank floors require a plywood subfloor. All nail heads must be driven down below the surface. Securely nail all loose boards. Scrape, plane or fill uneven boards, holes or cracks using floor levelling compound. Make sure the floor is smooth, clean, free of wax, grease, oil or dust and sealed as necessary before laying planks.

## INSTALLATION:

### Planning your floor - diagram 1

Begin laying your floor at the corner of the longest wall. Prior to removing the backing paper, lay a complete row of planks to determine the length of the final plank. If the last plank is shorter than 300mm, then adjust the starting point accordingly, this is necessary in order to achieve the correct staggered effect. The cut edge should always face the wall.

### Laying your floor - diagram 2

Remove the backing paper from your first plank and position this at your starting point. Check that this position is correct and apply firm, all over pressure to achieve complete contact. Lay all full planks ensuring a close fit but do not force together. When you reach the end row, cut the last plank to fit. Provided the offcut from your last row is longer than 300mm you can use this to start your second row. Ensure that the edge always faces the wall. Stagger the joints as per Diagram 2, a minimum 300mm apart.

To fit air vents, door frames etc. make a cardboard pattern as a guide and use this to draw an outline on the plank. Cut to shape and check that it fits before peeling off the backing paper. It should fit snugly and should not be forced into place.

### Final cutting last row - diagram 3

When you reach the last row you may find that the gap is less than one full plank wide. To ensure accurate cutting of the final row, lay the plank to be cut exactly over the last full plank, lay another full plank against the wall and mark the cutting line where the planks overlay. Before peeling off the backing paper, check that the cut plank fits correctly. The plank should not be forced into place.

## FINISHING AND MAINTENANCE

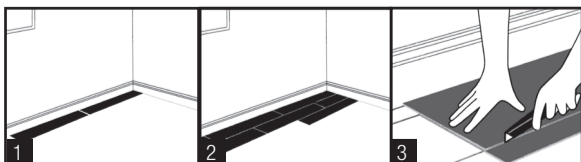
When you have finished laying your floor, go over the floor to check that all planks are firmly stuck down. The new floor can be walked upon immediately. Allow 5 to 7 days before washing the floor to allow the planks to adhere to the sub floor. Sweep regularly to remove surface grit and dust. Never use excessive amounts of water when cleaning the planks - use a damp cloth or mop and rinse with clean water. When necessary a mild detergent can be added to the water. DO NOT use abrasive cleaners. High heels can damage floors. Use protective pads under furniture. **CAUTION:** Planks are slippery when wet.

## LIFETIME RESIDENTIAL WARRANTY

This quality vinyl plank is guaranteed not to wear through or stain for the duration of your life in your home. Your vinyl plank flooring must be installed and maintained according to instructions supplied with each carton. This guarantee applies only to the original purchaser and proof of purchase is required for all claims. The guarantee is for replacement or refund of the vinyl plank only, no labor. Claims for wear must show a minimum dime size area. This guarantee is pro-rated based on the amount of time the floor has been installed. If you wish to file a claim under warranty, contact the authorized dealer where the flooring was purchased. \*Lifetime means 35 years.

## 20 YEAR COMMERCIAL WARRANTY

Our 20-Year Limited Commercial Warranty for vinyl plank means that for twenty years, from the date of purchase, your floor will be free from manufacturing defects; will not wear through or permanently stain from common household stains when installed and maintained according to instructions supplied with each carton. This guarantee applies only to the original purchaser and proof of purchase is required for all claims. The guarantee is for replacement or refund of the vinyl plank only, no labor. Claims for wear must show a minimum dime size area. This guarantee is pro-rated based on the amount of time the floor has been installed. If you wish to file a claim under warranty, contact the authorized dealer where the flooring was purchased.



IMPORTED BY / IMPORTÉ PAR / IMPORTADO CERCA:

**QUALITY CRAFT** Surrey, BC Canada V3S 5N4

[www.qualitycraft.com](http://www.qualitycraft.com)

MADE IN CHINA / FABRIQUÉ EN CHINE / HECHO EN CHINA